
Pantera Electronics Tachometer Adapter V-Mode Installation Manual

Tachometer Adapter Features and Benefits:

1. Converts ignition system pulse to trigger for Veglia tach or other factory vintage tachs.
2. Tach Adapter accepts signals from ignition systems, ECU's and digital distributors and converts to operate the high voltage tachometers.
4. Control wire for a relay to activate fuel pumps or electric carburetor chokes or anything that needs to be activated only when the engine is rotating.
5. Includes a color integrated LED bargraph display as a RPM reference tachometer, 1,000 to 10,000 RPM in 1000 RPM increments.
6. Blue indicator for input pulses from distributor, ignition system or ECU's.
7. Green indicator for "ON" or active indicator.
8. Replaces MSD 8920 wire for wire. (accept for the PE control output)



WARNING !

This device generates high voltage on the blue wire. Any time the engine is operating there is a shock hazard by touching the blue wire or anything it is connected to.

Disclaimer

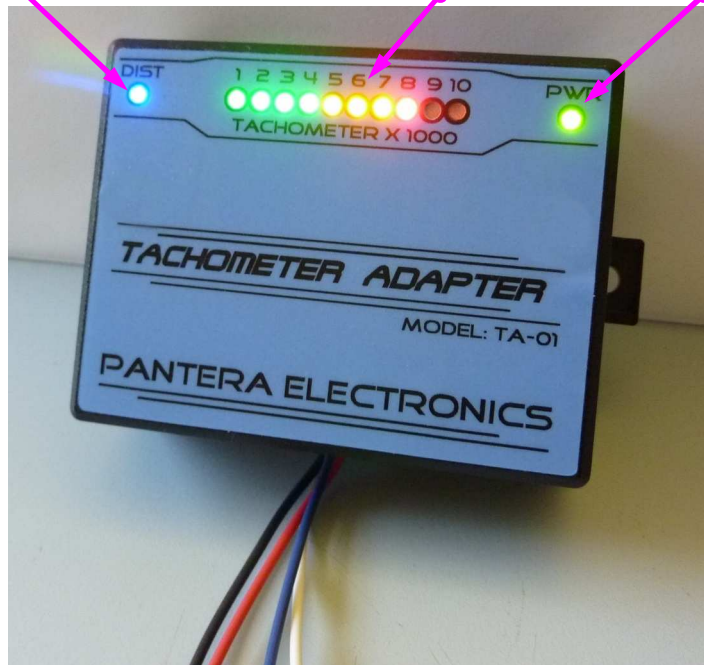
The products from Pantera Electronics have been designed and manufactured with the best quality components known to the engineer. The installation instructions have been written to assist the owner in the proper use and installation of the products. Pantera Electronics can not be held responsible or held liable for the interpretation or incorrect implementation of the products.

Connections and Indicators for Tachometer Adapter

Blue indicator for pulses from distributor or ignition system. The blue indicator will flash when starting the engine and flash faster as the engine transitions from start to idle.

10 LED indicators for engine RPM in increments of 1,000 RPM. As the RPM increases the next light will gradually illuminate about 200 RPM before the full brightness at the indicated RPM.

Green indicator power "ON". The green indicator is illuminated when the ignition is "ON".



RED wire - connect to +12V when the ignition switch in the "Ignition" position.

BLACK wire - connect to chassis ground.

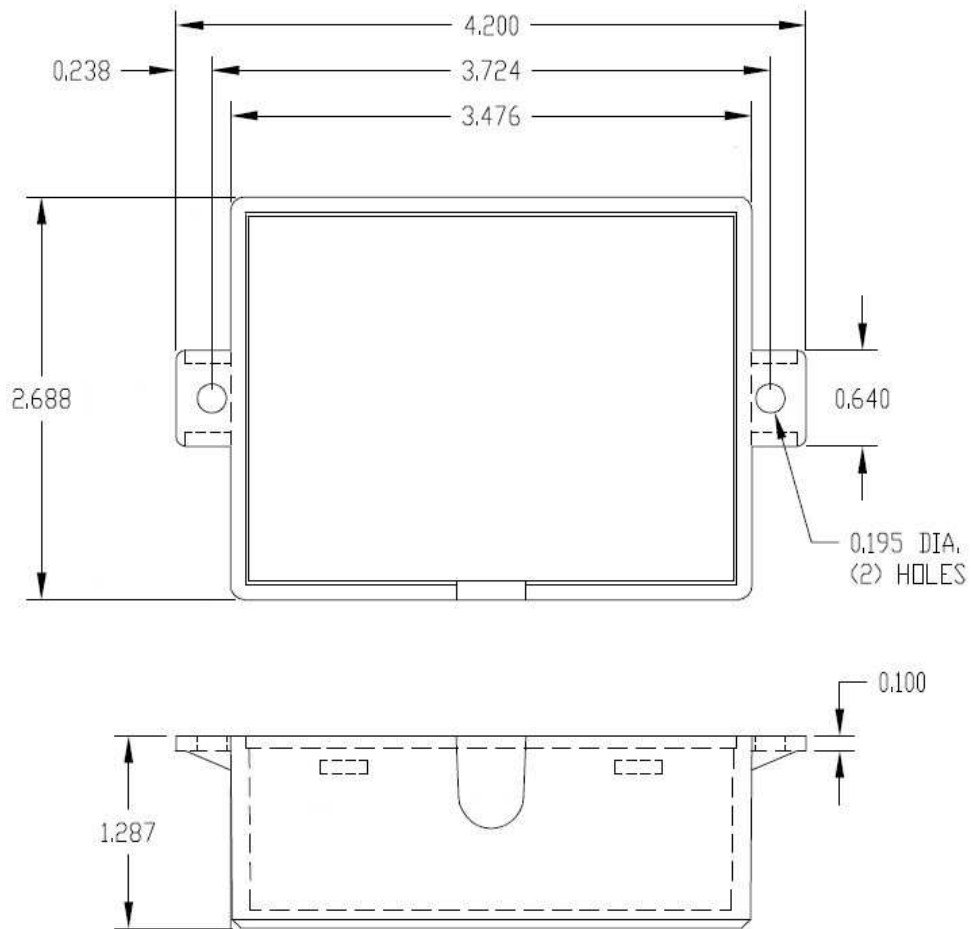
WHITE wire - connect to the ignition system that is generating RPM pulses.

BLUE wire - connect to the tachometer trigger wire. (**WARNING - HIGH VOLTAGE**)

YELLOW wire - connect to a relay to control fuel pump or choke.
(output can supply +12V at a maximum of 2 Amps.)

NOTE: It's important to keep this installation manual for future reference since revisions to this product change the contents of the installation manual.

Mounting Dimensions



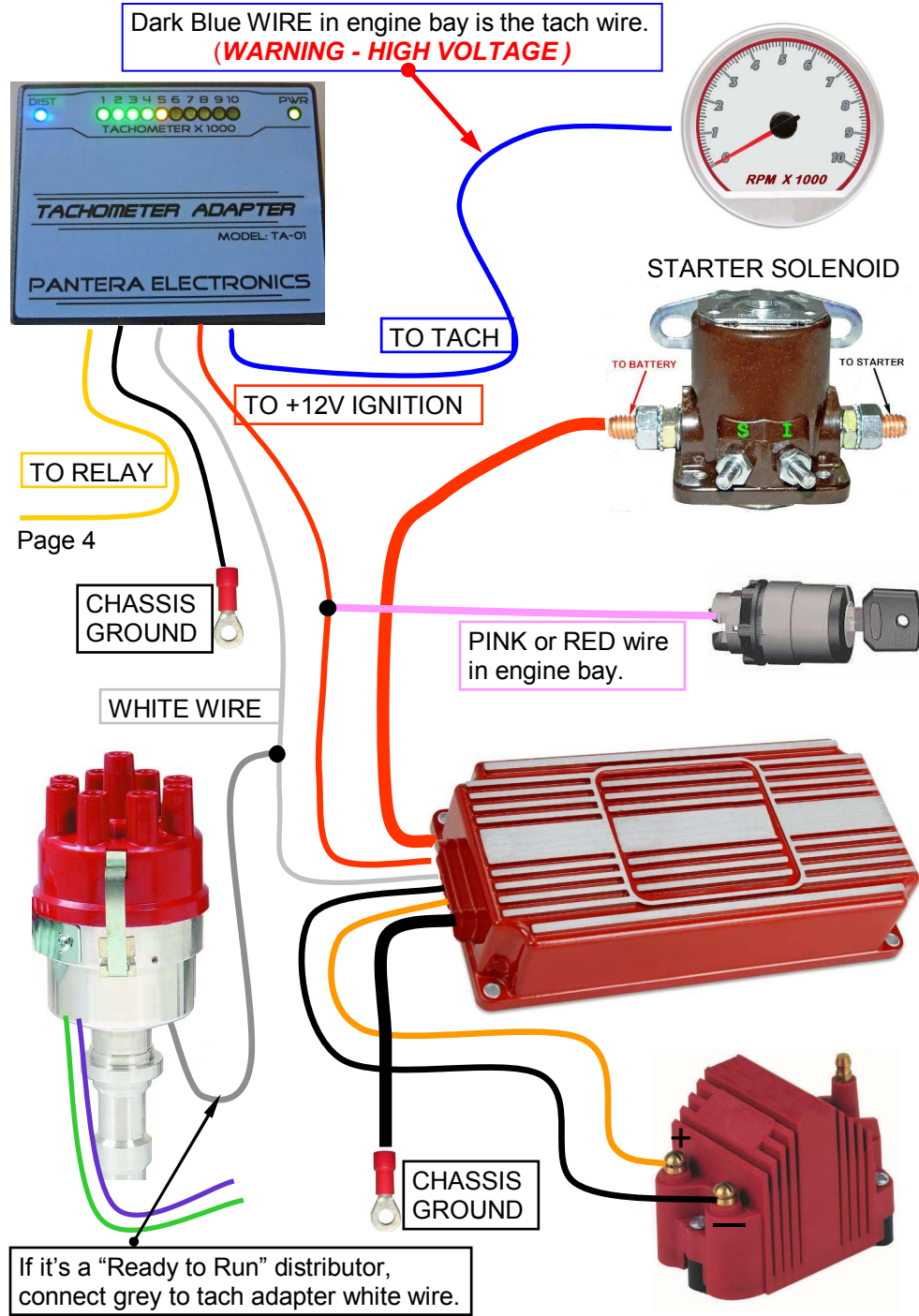
Note:

The front of the enclosure is sealed from moisture and water pressure.

The back of this enclosure is NOT sealed, do not mount it in a location that the back of the enclosure is subjected to water pressure.

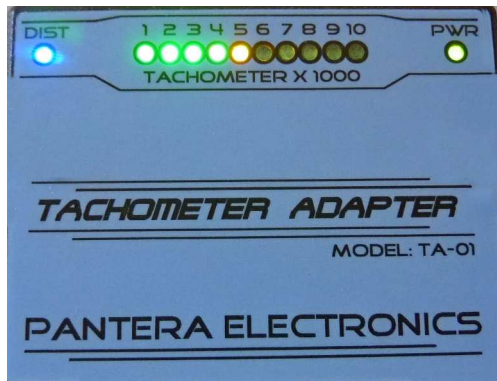
The back of the enclosure can be sealed with clear RTV but condensation can collect and cause failure. Leave the wire hole free of RTV to allow the condensation to leave. There is enough heat generated to keep the inside of the enclosure dry if there is a vent for condensation.

Wiring the Tach Adapter to an ignition system for a vintage tachometer.
 (including de Tomaso Pantera Veglia tachometer)



Page 4

Tachometer Adapter Wiring for Fuel Pump Control
(fuel pump operates only when engine is rotating)

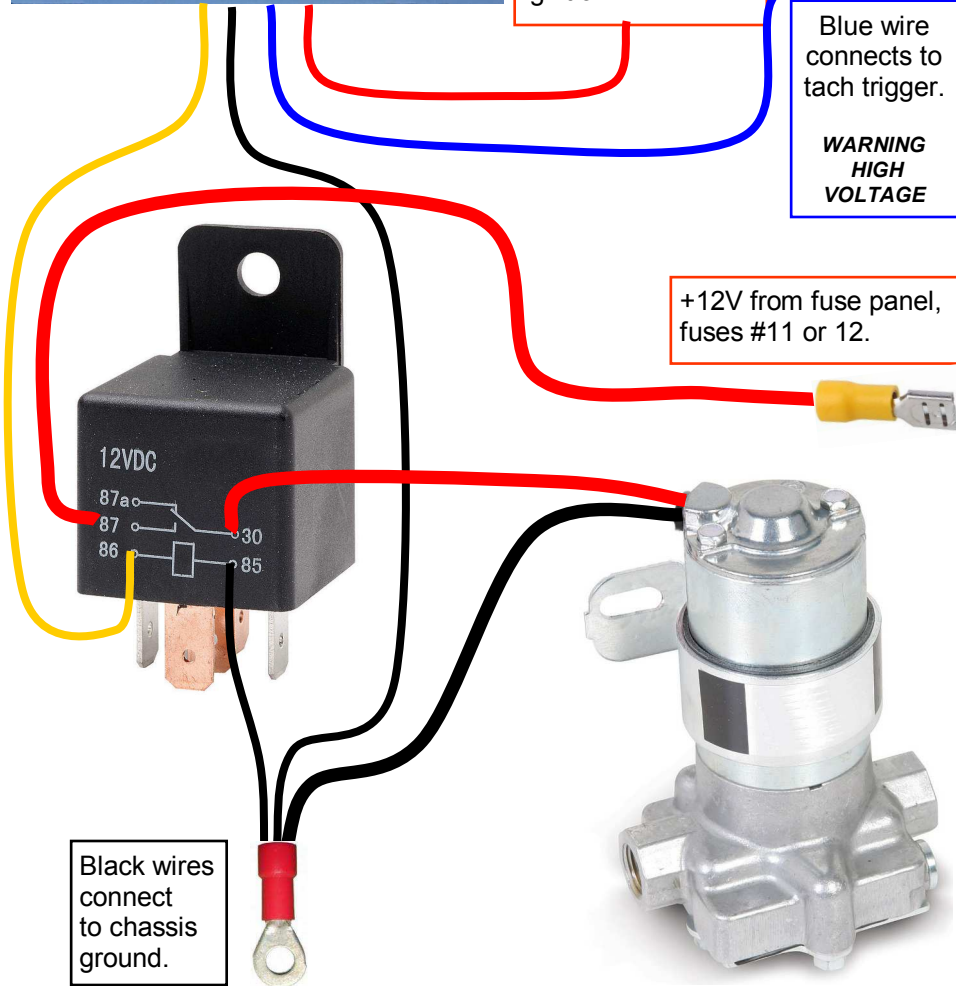


Red wire connects to switched +12V ignition.

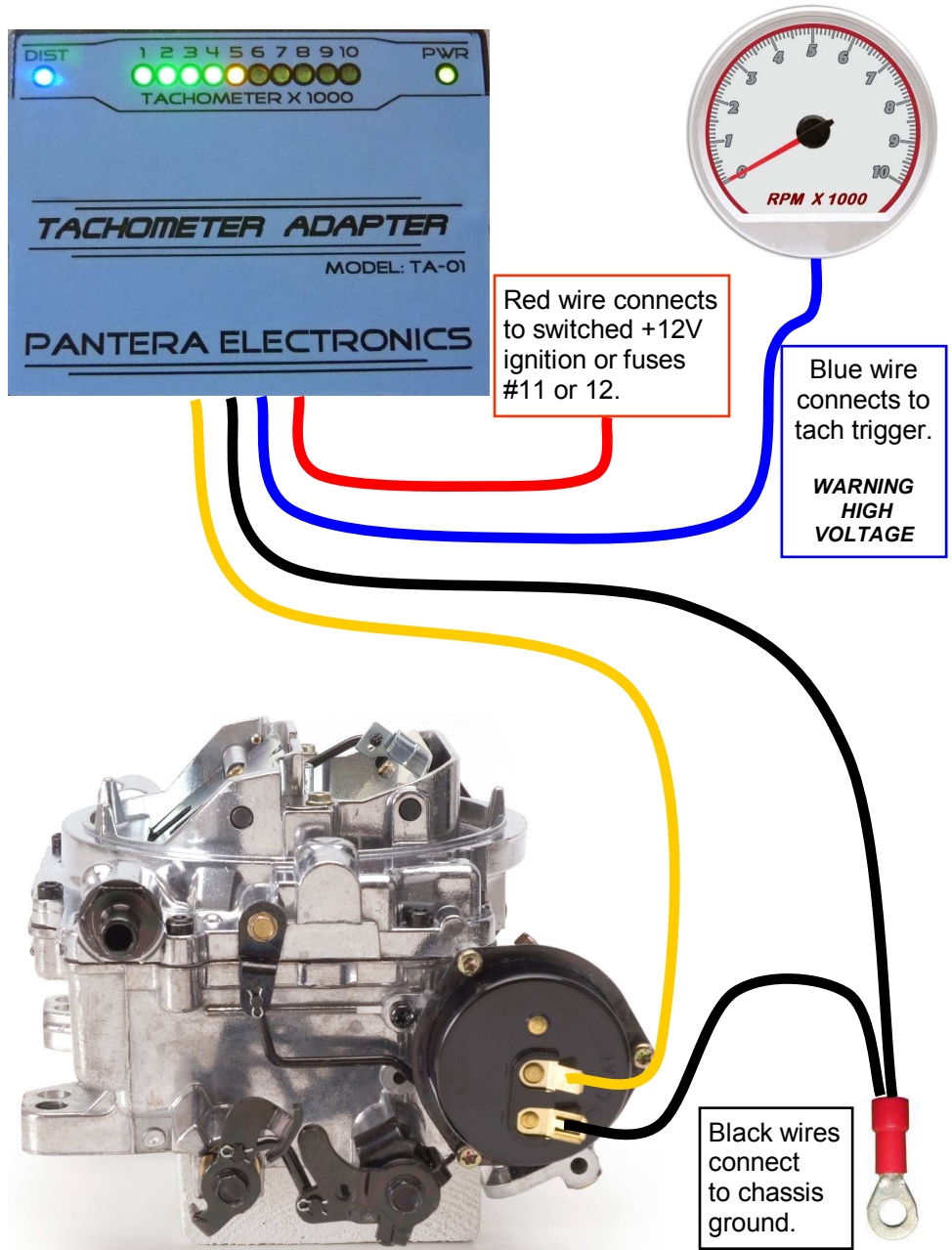
Blue wire connects to tach trigger.
**WARNING
HIGH
VOLTAGE**

+12V from fuse panel, fuses #11 or 12.

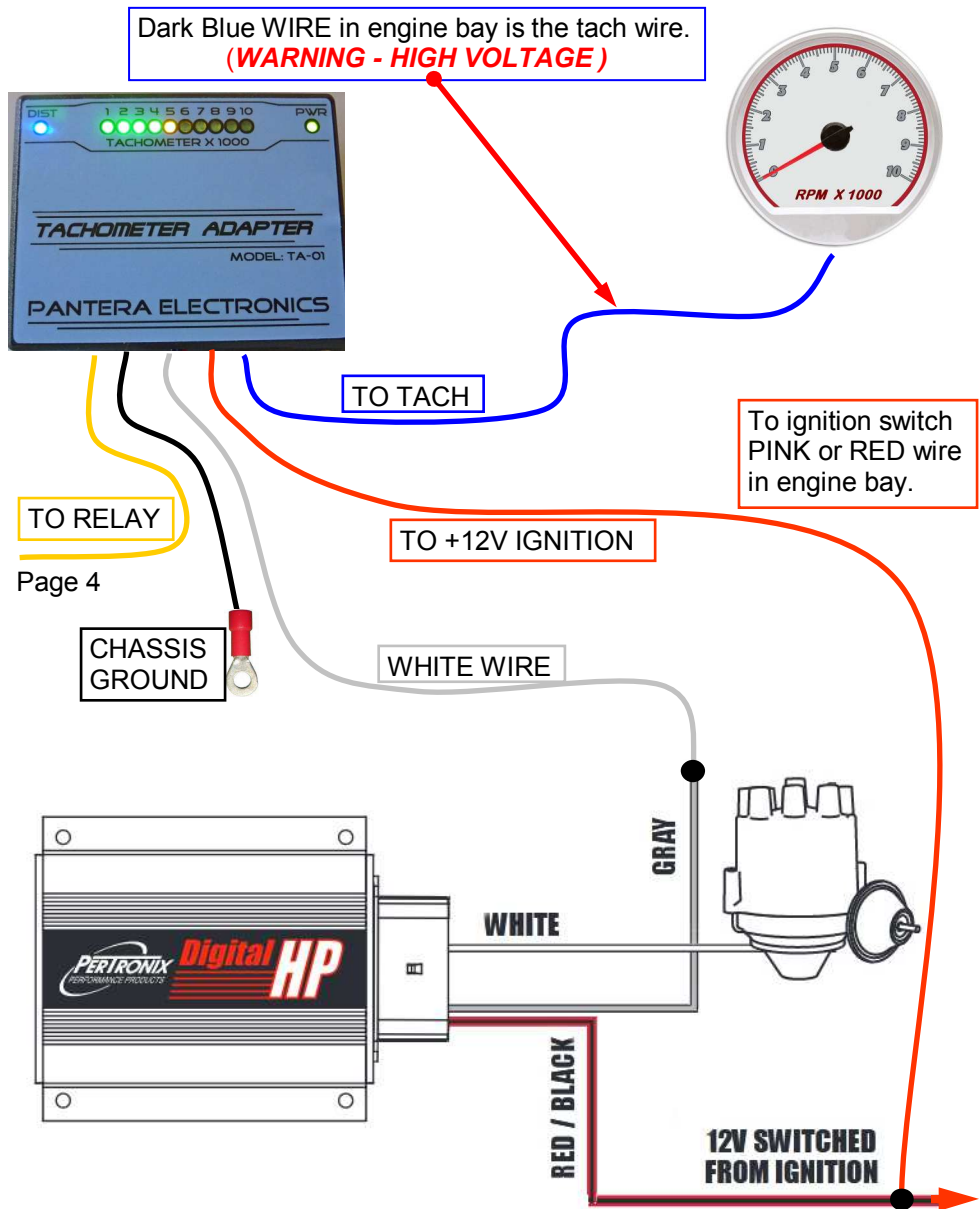
Black wires connect to chassis ground.



Tachometer Adapter Wiring for Carburetor Electric Choke
(Choke is activated only when engine is rotating)



Wiring the Tach Adapter to Pertronix ignition system for a vintage tachometer. (including de Tomaso Pantera Veglia tachometer)



Page 4

Wiring the Tach Adapter to a Holley Sniper fuel injection system for a vintage tachometer. (including de Tomaso Pantera Veglia tachometer)

