
Pantera Electronics LED Side Marker lamp Installation Manual

This installation manual is to assist in the installation of Pantera-Electronics Side Marker LED lamp. The Side Marker LED lamp is a replacement for the incandescent bulb in both the rear and front the side marker lights.

Many times the bulb socket is in poor condition and may need to be replaced. This might not be noticed until the bulb is removed and disturbs the position of the spring contacts in the bulb socket. There might only be part of the contact left and will not have enough spring tension after the bulb is removed to contact the side marker LED lamp.

Note: *Dielectric grease is a good preventative measure to keep water and dirt away from the contacts in the bulb socket.*

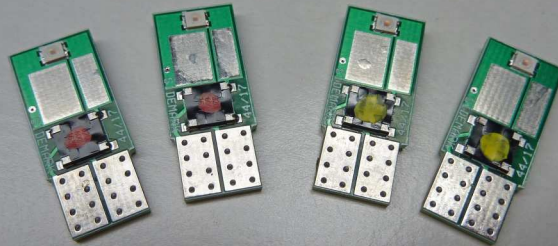
Side Marker LED lamps are manufactured with red and yellow LED's.

Yellow LED's for the front side marker lights and the red are for the rear side marker lights.

Notice the side marker LED lamp is marked with a red or yellow dot on a small black box on each lamp.

The LED Side Marker lamps can be installed in the socket either direction without damage.

One complete set of LED Side Marker lamps



LED Side Marker lamps specs:

42 Lumens

67 mA

13.8 Volts

0.90 Watts

40,000 hours life

Do not replace the bulbs with the Side Marker LED lamps while the lights are "ON".

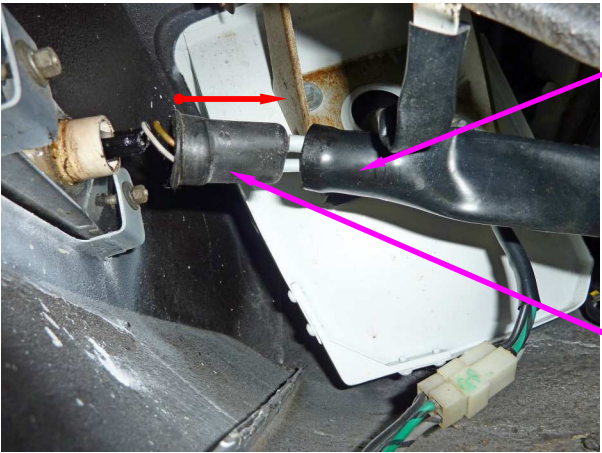
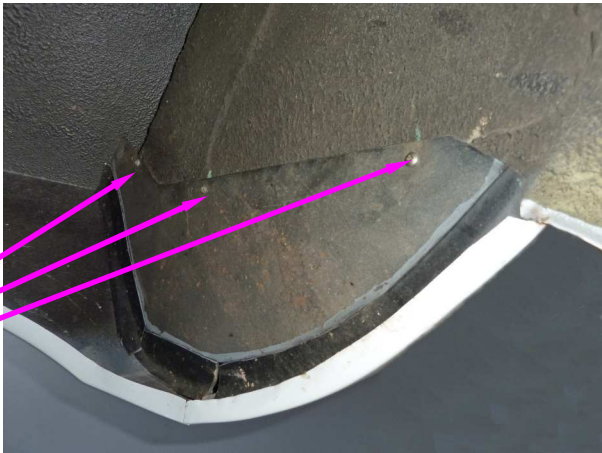
Replacing the left hand yellow front side marker lamps



Turn the steering wheel to the far left hand direction, this will provide clearance for installing the left hand front LED side marker lamp.

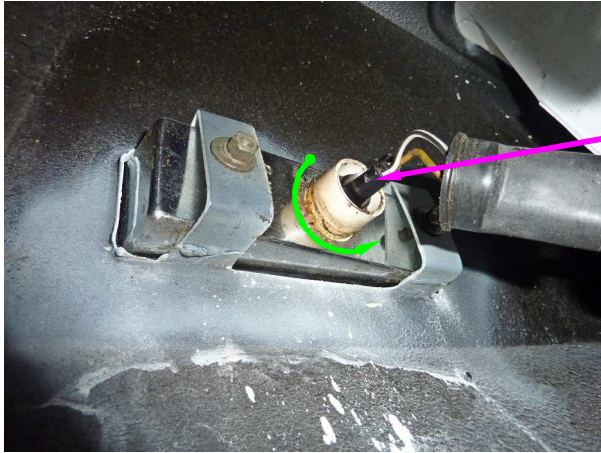
Turn the steering wheel to the far right hand direction, this will provide clearance for installing the right hand front LED side marker lamp.

Remove (3) screws that retain splash shield.



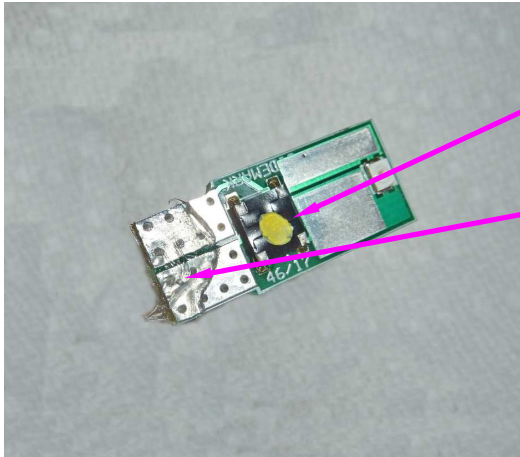
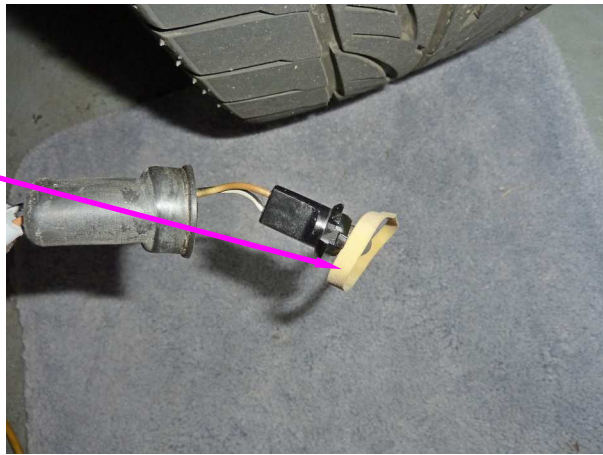
Pull back the sleeve to reveal the boot.

Pull the lamp socket boot back.



Grasp the lamp socket and rotate counter clockwise 1/4 turn.

Remove the light bulb by pulling out.
Use a rubber band to increase grip if necessary.



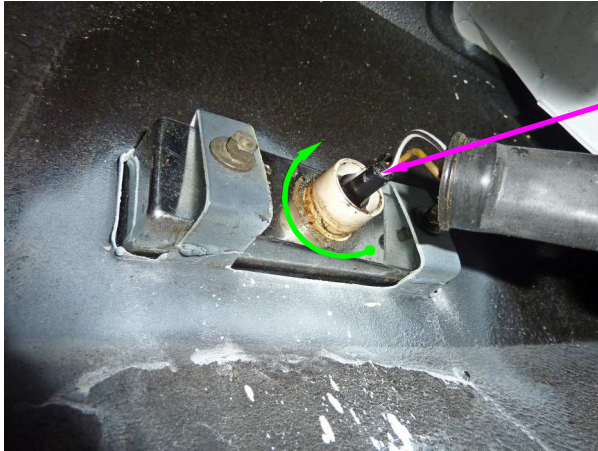
Select the LED side marker lamp with the yellow dot.
Add dielectric grease to the LED side marker lamp base.



The proper dielectric grease can be purchased locally.
Pantera-Electronics also can provide
1 ounce and 4 ounce tubes of dielectric grease.

Insert the yellow LED side
marker lamp in the socket.

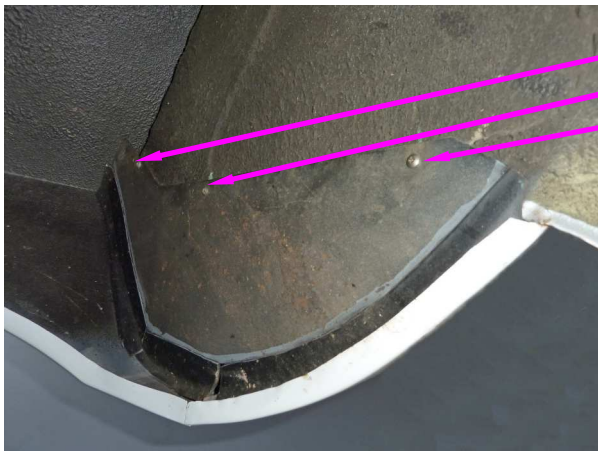




Replace the lamp socket by inserting and rotate 1/4 turn clock-wise.



Replace the boot and sleeve.
Replace the sleeve in the hanger.



Replace splash shield and (3) screws that retain it.

Repeat the procedure for the front right hand side

Replacing the rear left hand side marker lamps



The rear side marker lamp can be reached within the wheel well.

If the shock spacers are still install as in this picture you may be able to side your arm on top of the tire.

If shock spacers were removed possibly reach behind the tire or remove the wheel.



Pull back the sleeve to reveal the boot.

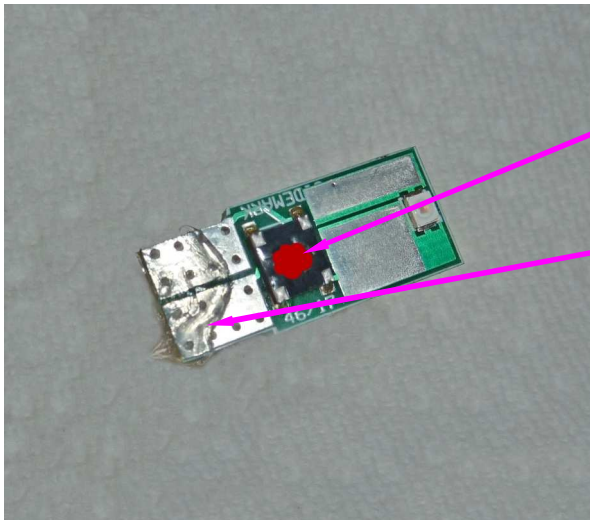
Pull the lamp socket boot back.



Grasp the lamp socket and rotate 1/4 turn counter clockwise .

Remove the light bulb by pulling out.

Use a rubber band to increase grip if necessary.



Select the LED side marker lamp with the red dot.

Add dielectric grease to the LED side marker lamp base.

Insert the red LED side marker lamp in the socket.





Replace the lamp socket by inserting and rotate 1/4 turn clock-wise.

Replace the boot and sleeve.
Replace the sleeve in the hanger



Repeat the procedure for the rear right hand side

NOTE: It's important to keep this installation manual for future reference since revisions to this product change the contents of the installation manual.

Disclaimer
The products from Pantera Electronics have been design and manufactured with the best quality components known to the engineer. The installation instructions have been written to assist the owner in the proper use and installation of the products. Pantera Electronics can not be held responsible or held liable for the interpretation or incorrect implementation of the products.