

---

---

## Pantera Electronics LED Door Courtesy Lamp Installation Manual

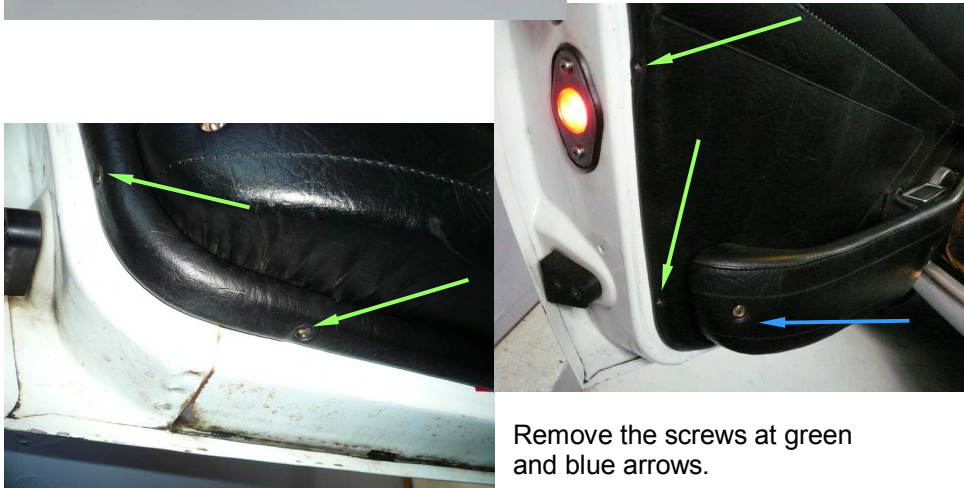
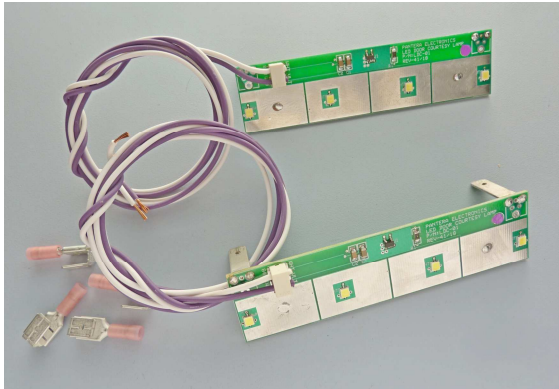
---

---

LED Door Courtesy Light - to illuminate the ground area below the open door.

The LED Door Courtesy Light uses the latest LED technology to improve visibility entering and exiting the Pantera.

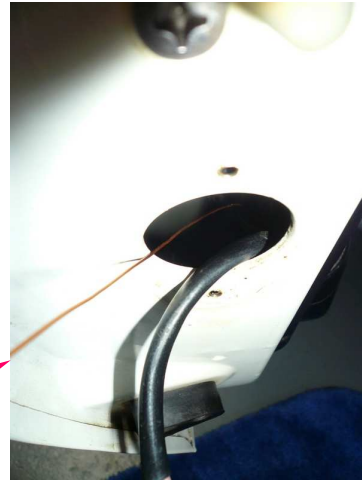
- > 4 High intensity white LED's with minimal heat generation and low power usage.
- > Automatically illuminates the area below the door when opened.
- > Simple 2 wire connections to the Pantera wire harness.
- > Rugged construction, no filament to break.
- > Designed specifically for the Pantera, very easy installation.



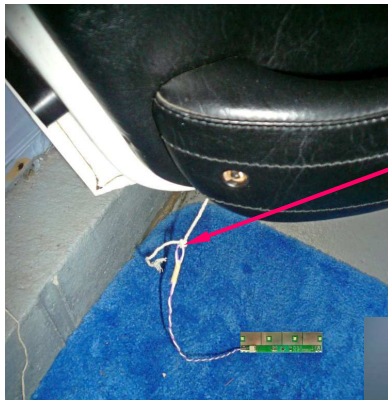
Remove the screws at green and blue arrows.



Remove (2) screws that mount the door jamb light.



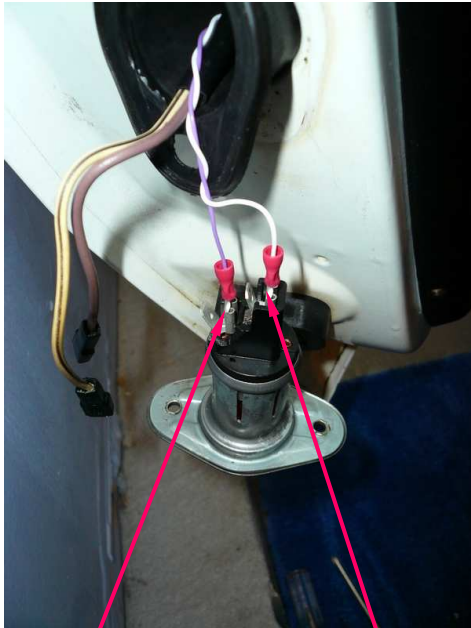
Use a wire about 18 AWG and fish it through the door jamb light socket down toward the edge of the door panel. **Gently** pry with your fingers the bottom of the door panel to allow the wire slide out. This may take several tries.



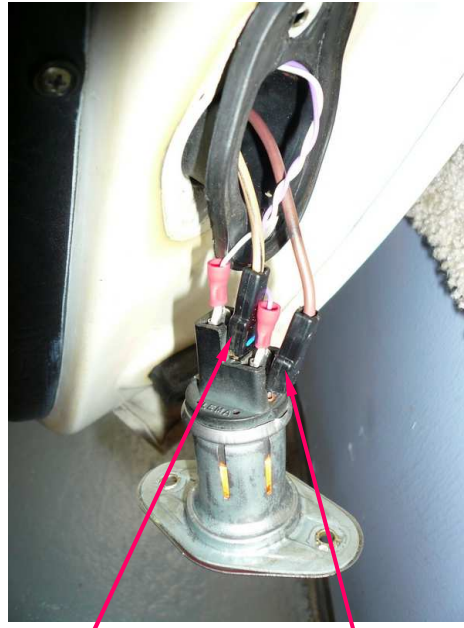
Tape the fish wire to the Door Courtesy wires.

Pull the fish wire up until the LED Door Courtesy wires come out of the hole. Gently pry (with fingers) the door panel open to ease the wire through.

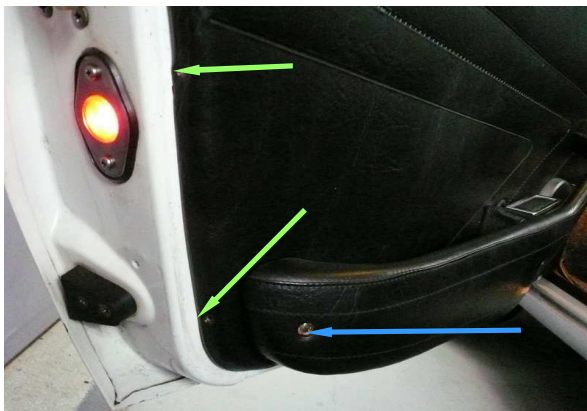




Crimp terminals on wires and insert the terminal on door jamb light socket tabs.



Connect original wires to door jamb light socket tabs.



Mount LED Door Courtesy Light by sliding the metal tabs between the arm rest and door panel and tighten the arm rest screw **first** blue arrow then tighten the door panel screws with green arrows.

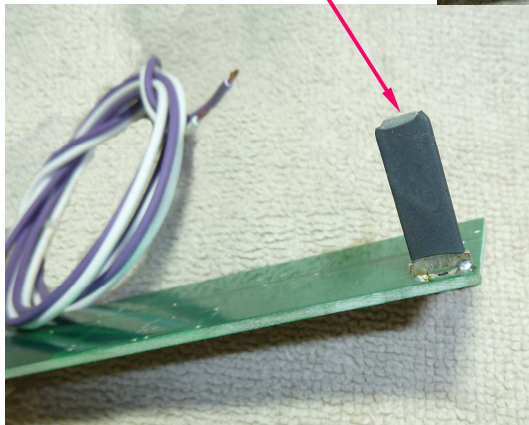
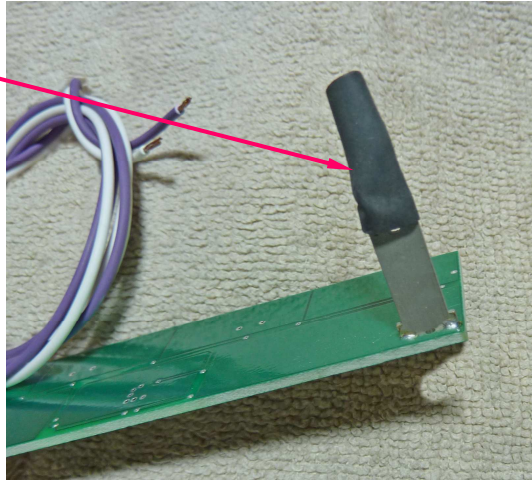
### Disclaimer

The products from Pantera Electronics have been designed and manufactured with the best quality components known to the engineer. The installation instructions have been written to assist the owner in the proper use and installation of the products. Pantera Electronics can not be held responsible or held liable for the interpretation or incorrect implementation of the products.

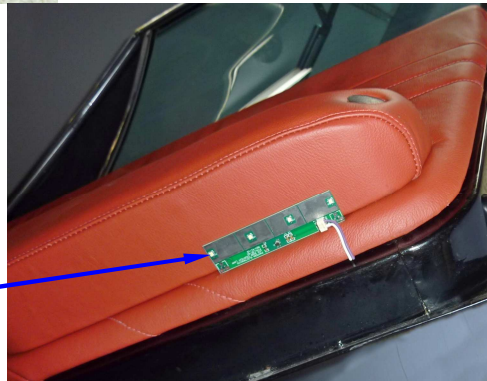
After tightening the screws if the LED panel feels loose then slide a piece of heatshrink tube over the tab and apply heat.

The heatshrink increases the thickness and has much higher friction than just the tab.

Install heat-shrink on each tab.



The wires can be wrapped around the edge of the door panel. Then painted black or the color of the door panel with a marker pen.



**NOTE:** It's important to keep this installation manual for future reference since revisions to the product change the contents of the installation manual.